

Advanced Care

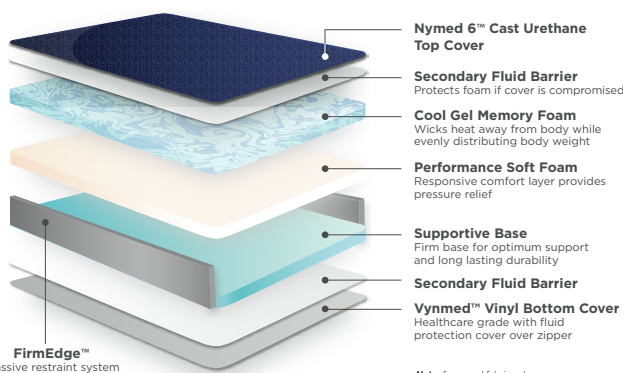
General Patient and ICU/CCU Hospital Mattress
with Cool Gel Memory Foam



Select the high comfort and unmatched luxury of our deluxe Advanced Care pressure reduction mattress for higher risk patients

6" thick Certi-PUR-US foam provides comfortable support for individual's up to 300lbs.

- Cool-Gel infused memory foam top layer
- Performance soft foam internal layer
- Supportive firm foam base layer



Note: foam and fabric colors may vary

FirmEdge™ passive restraint system

- Provides support on both sides of the mattress during entry and egress

Nymed 6™ Health Care Grade Nylon Top Cover

- Water resistant, flame resistant
- Anti-bacterial, anti-fungal, non-allergenic
- Non-irritating, latex free

Vynmed™ Health Care Vinyl Bottom Cover

- Anti-bacterial, anti-fungal, water & stain resistant
- Non-allergenic, non-irritating
- Latex free and odor resistant

Secondary Fluid Barrier

- Assembled between foam and cover provides a unique protection; if the outer layer is compromised, foam is protected

Removeable Cover

- Heavy duty zipper on bottom allows for internal mattress inspection and easy replacement
- Includes fluid protection flap over zipper which directs fluids over and away from the zipper area

Cool Gel
Memory Foam

Performance
Soft Layer

Supportive
Base

FirmEdge™ Passive
Restraint System



Nymed 6™ Nylon Top Cover

Fluid Flap Over
Heavy-Duty Zipper

Vynmed™ Vinyl
Bottom Cover



Heavy-duty zipper



Fluid protection flap
over zipper



Flame Resistant



Secondary Fluid
Barrier



CertiPUR-US Foam



12 Month Warranty



Made in the USA



Removable Nylon
Cover



Patient Weight Limit



Cool Gel Memory
Foam



FirmEdge™
Passive Restraint

Advanced Care Mattress Technology

Mattress Core

3 Foam Layers:

- Cool-Gel infused memory foam top layer
- Performance soft foam internal layer
- Supportive firm foam base layer
- All foam is CertiPUR-US certified which means:
 - Made without ozone depleters
 - Made without PBDEs, TDCPP or TCEP ("Tris") flame retardants
 - Made without mercury, lead and other heavy metals
 - Made without formaldehyde
 - Made without phthalates regulated by the Consumer Product Safety Commission
 - Low VOC (Volatile Organic Compound) emissions for indoor air quality (less than 0.5 parts per million)

Secondary Fluid Barrier:

- Assembled between foam and cover
- Unique protection: If the outer cover is compromised, foam is protected

Removable Cover

- Nymed 6™ healthcare breathable nylon top cover
- Vynmed™ durable healthcare coated vinyl bottom
- Heavy-duty zipper on sides allows for internal mattress inspection & easy replacement
- Fluid protection flap over zipper, designed to direct fluids over and away from the zipper area
- Fluid proof, anti-bacterial, anti-fungal, stain resistant
- Non-allergenic, non-irritating, latex free
- Flame retardant, meets California Technical Bulletin 121 and CFR 1633

Fire Barrier Protective Layer

- Assembled between foam and cover, meets California Technical Bulletin 129 and CFR 1633

FirmEdge™ Passive Restraint System

- Two 3" wide zones of ultra-firm foam provide support on both sides of the mattress during entry and egress

Optional Features Available

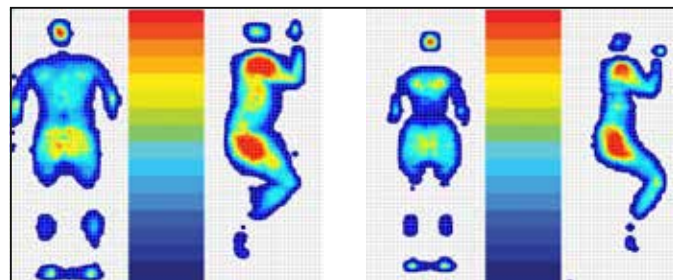
- We make many sizes to fit OEM products. Visit our website to download and submit our stretcher template chart for a quote

12 month Standard Warranty

- Standard warranty covers material and workmanship.
- Extended warranty available

Pressure and distribution imaging report prepared by RDSI for North America Mattress Corp.

Computerized mapping confirms outstanding redistribution of pressure across the mattress surface. Please contact NAMC for detailed Report.



Left: Male, 5'10", 190lbs

Right: Female, 5'3", 120lb

SPECIFICATIONS

Thickness:	6"
Weight Capacity:	300lb



North America Mattress Corp.

P.O. Box 2109 | Clackamas, OR 97015

Toll Free: +1 800 448 6163

Local: 503 655 6163

E-mail: sales@namattress.com